

**CAN**

**MUST**

**SHOULD**

**MODALS**

**@CREATERIALS**

# RULES

These are the rules to play this game. Good luck!



## RULE 1:

In groups of four, you have to write a sentence using a modal for each of the situations given.

You must write it correctly in order to remain in the game. If you use an incorrect modal, you are out of the game.

# RULES

These are the rules to play this game. Good luck!



## RULE 1:

In groups of four, you have to write a sentence using a modal for each of the situations given.

You must write it correctly in order to remain in the game. If you use an incorrect modal, you are out of the game.

You can only answer when you are required to do so. The leader of the group will choose you to answer.

## RULE 2:

Each team answers in a piece of paper. You have 20 seconds to write your answer. Then, each team shows their answers at a time.

# RULES

These are the rules to play this game. Good luck!



## RULE 1:

In groups of four, you have to write a sentence using a modal for each of the situations given.

You must write it correctly in order to remain in the game. If you use an incorrect modal, you are out of the game.

You can only answer when you are required to do so. The leader of the group will choose you to answer.

## RULE 2:

Each team answers in a piece of paper. You have 20 seconds to write your answer. Then, each team shows their answers at a time.

## RULE 3:

You will win one point for each correct answer.

Example:

- ✓ You must wear a helmet when you ride a bike.
- ✗ You should wear a helmet when you ride a bike.

# SUMMARY OF MODALS

## **CAN:**

- To talk about ability
- To talk about possibility

## **SHOULD:**

## **MUST:**

# SUMMARY OF MODALS

## **CAN:**

- To talk about ability
- To talk about possibility

## **SHOULD:**

- To give advice
- To recommend something

## **MUST:**

# SUMMARY OF MODALS

## **CAN:**

- To talk about ability
- To talk about possibility

## **SHOULD:**

- To give advice
- To recommend something

## **MUST:**

- To give strong advice
- To talk about obligation
- To talk about prohibition and strong advice against something (mustn't)

# TIME TO CREATE YOUR SENTENCE

you have got 20 seconds - remember the modal



YOU WANT TO RIDE A BIKE WITH FRIENDS = HELMET



# TIME TO CREATE YOUR SENTENCE

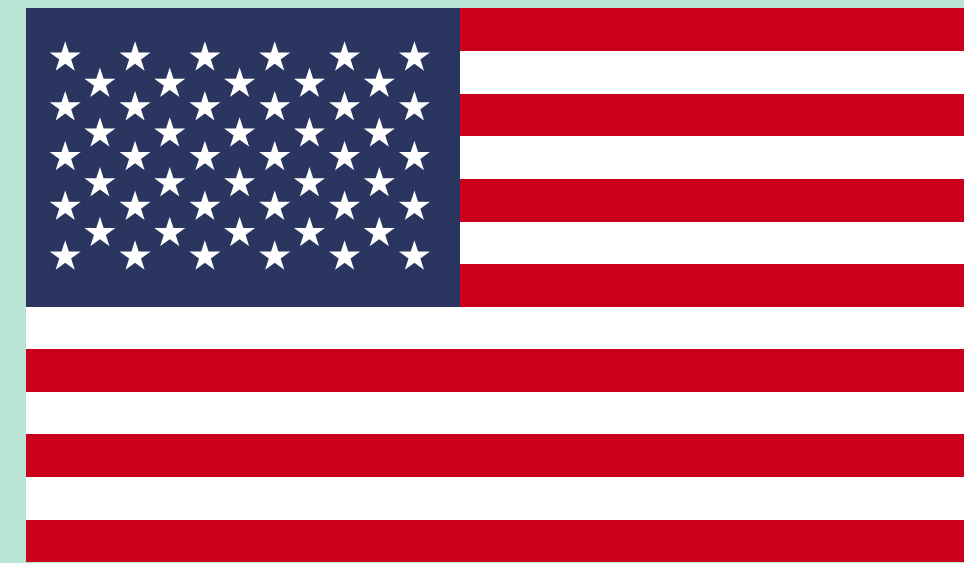
you have got 20 seconds - remember the modal



YOU **MUST** WEAR A HELMET WHEN YOU RIDE A BIKE WITH YOUR  
FRIENDS

# TIME TO CREATE YOUR SENTENCE

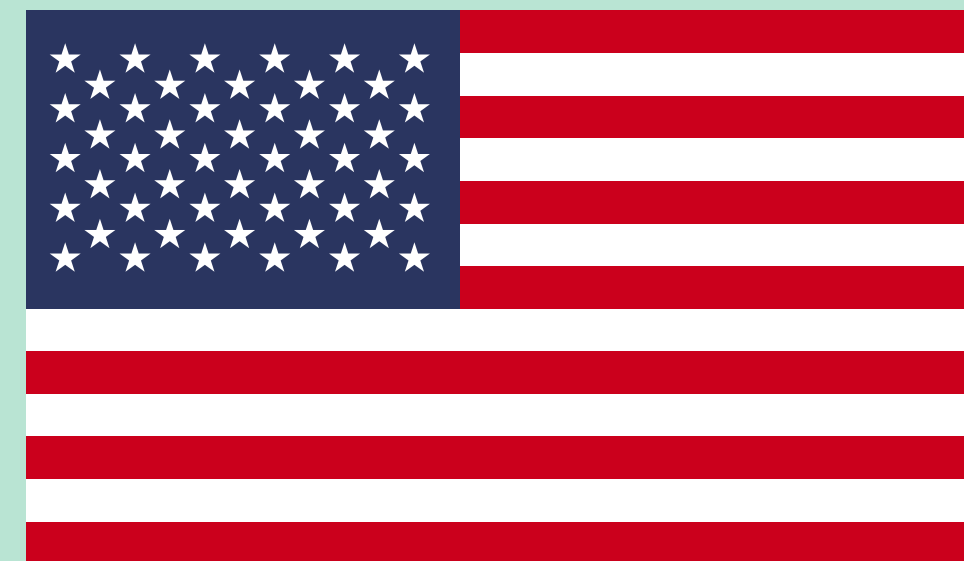
you have got 20 seconds - remember the modal



YOU WANT TO TRAVEL TO THE USA = PASSPORT

# TIME TO CREATE YOUR SENTENCE

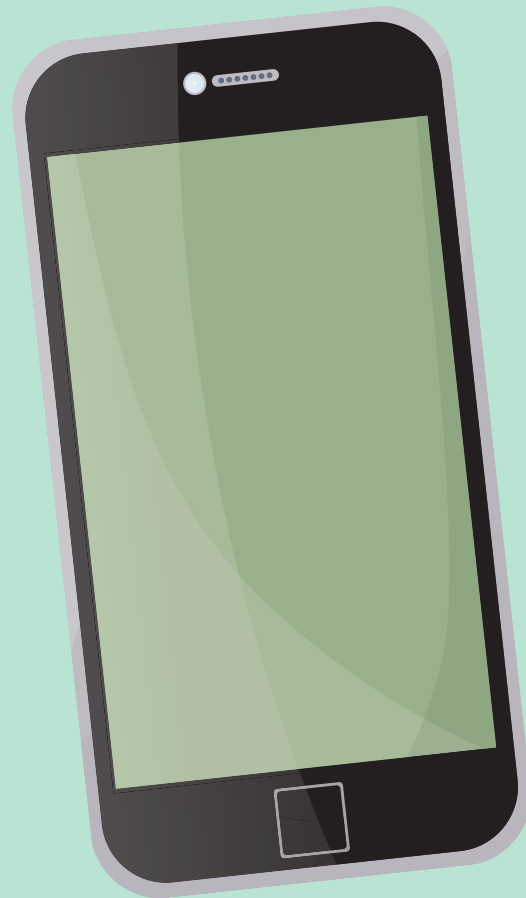
you have got 20 seconds - remember the modal



YOU **MUST** HAVE A PASSPORT TO TRAVEL TO THE USA

# TIME TO CREATE YOUR SENTENCE

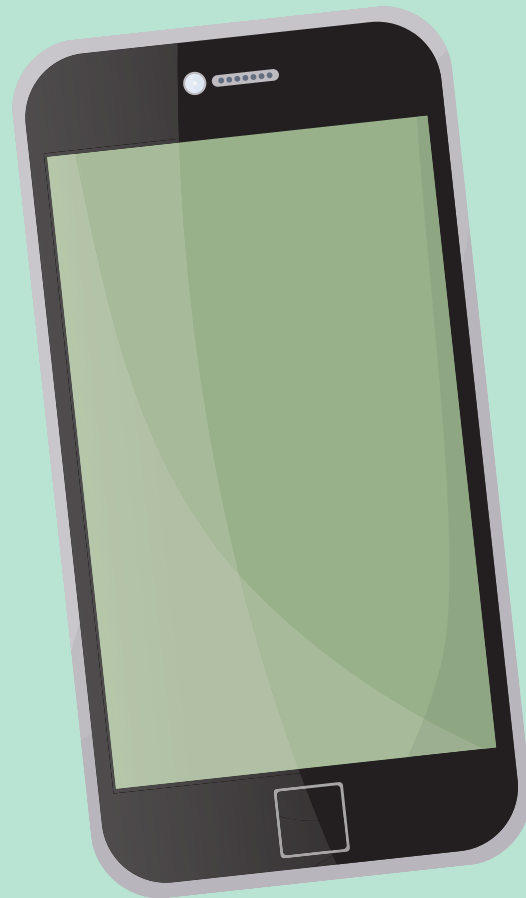
you have got 20 seconds - remember the modal



A PLANE IS ABOUT TO TAKE OFF = MOBILE PHONE

# TIME TO CREATE YOUR SENTENCE

you have got 20 seconds - remember the modal



YOU **MUSTN'T** USE YOUR MOBILE PHONE WHEN THE PLANE TAKES  
OFF / YOU **MUST** TURN OFF YOUR MOBILE PHONE WHEN ...

# TIME TO CREATE YOUR SENTENCE

you have got 20 seconds - remember the modal



SLEEP = 8 HOURS

# TIME TO CREATE YOUR SENTENCE

you have got 20 seconds - remember the modal



YOU SHOULD SLEEP 8 HOURS EVERY DAY / YOU SHOULDN'T  
SLEEP LESS THAN 8 HOURS EVERY DAY

# TIME TO CREATE YOUR SENTENCE

you have got 20 seconds - remember the modal



B A B Y = G I V E A S P E E C H



# TIME TO CREATE YOUR SENTENCE

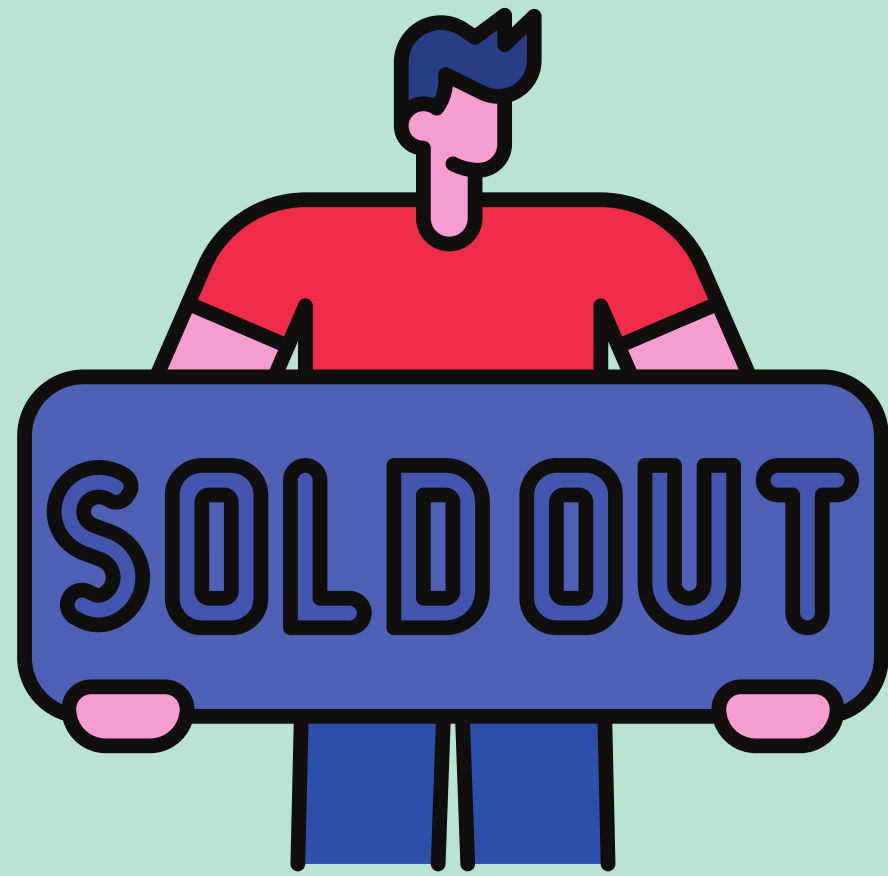
you have got 20 seconds - remember the modal



A BABY **CAN'T** GIVE A SPEECH

# TIME TO CREATE YOUR SENTENCE

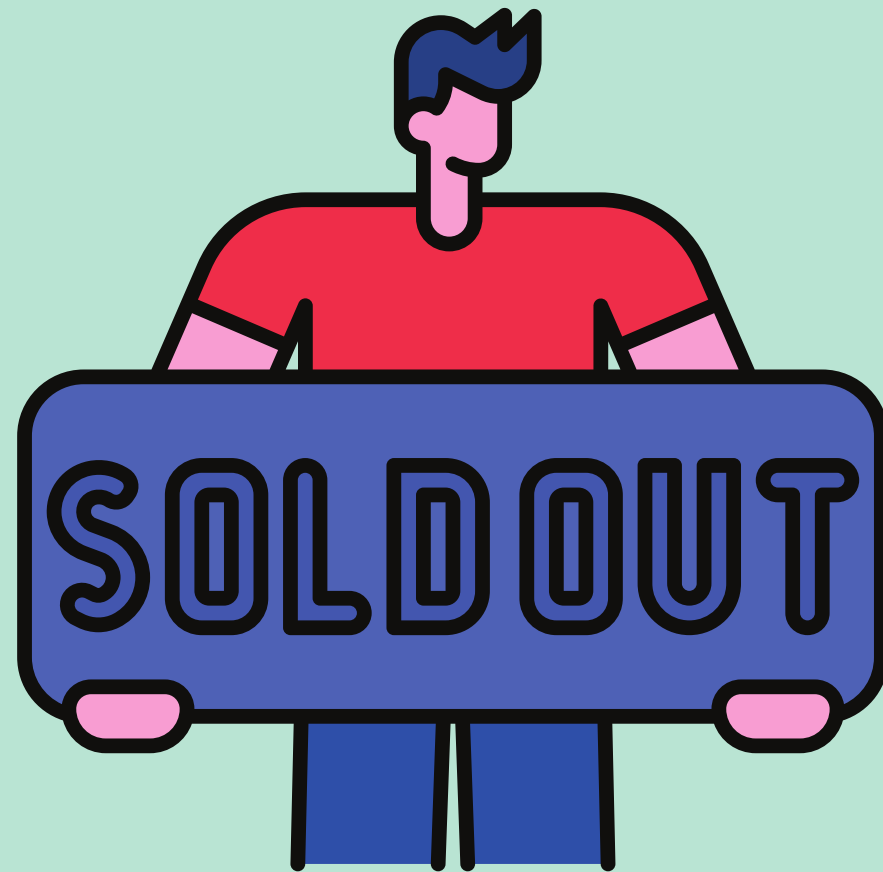
you have got 20 seconds - remember the modal



THERE ARE NO FLIGHTS TO JAPAN = TRAVEL

# TIME TO CREATE YOUR SENTENCE

you have got 20 seconds - remember the modal



THERE ARE NO FLIGHTS TO JAPAN SO YOU CAN'T TRAVEL THERE

# TIME TO CREATE YOUR SENTENCE

you have got 20 seconds - remember the modal



DRIVE A CAR = OVER EIGHTEEN

# TIME TO CREATE YOUR SENTENCE

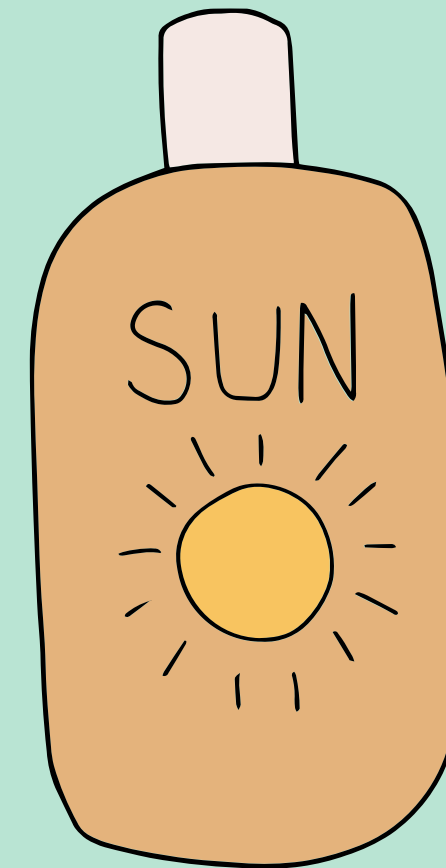
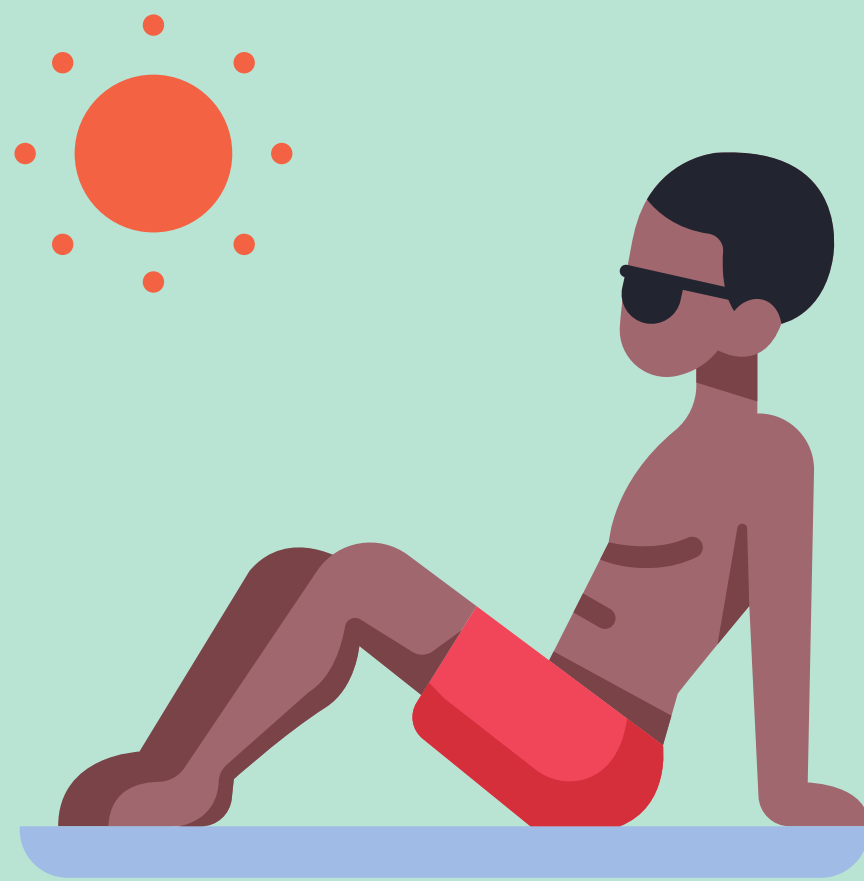
you have got 20 seconds - remember the modal



YOU **MUST** BE OVER EIGHTEEN TO DRIVE A CAR

# TIME TO CREATE YOUR SENTENCE

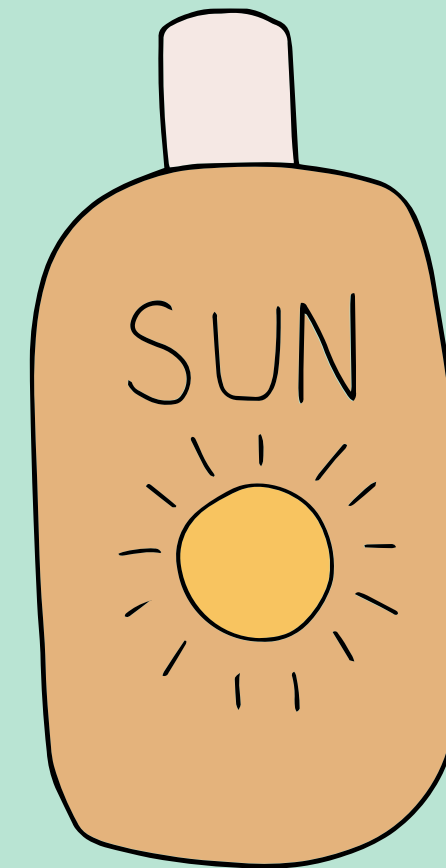
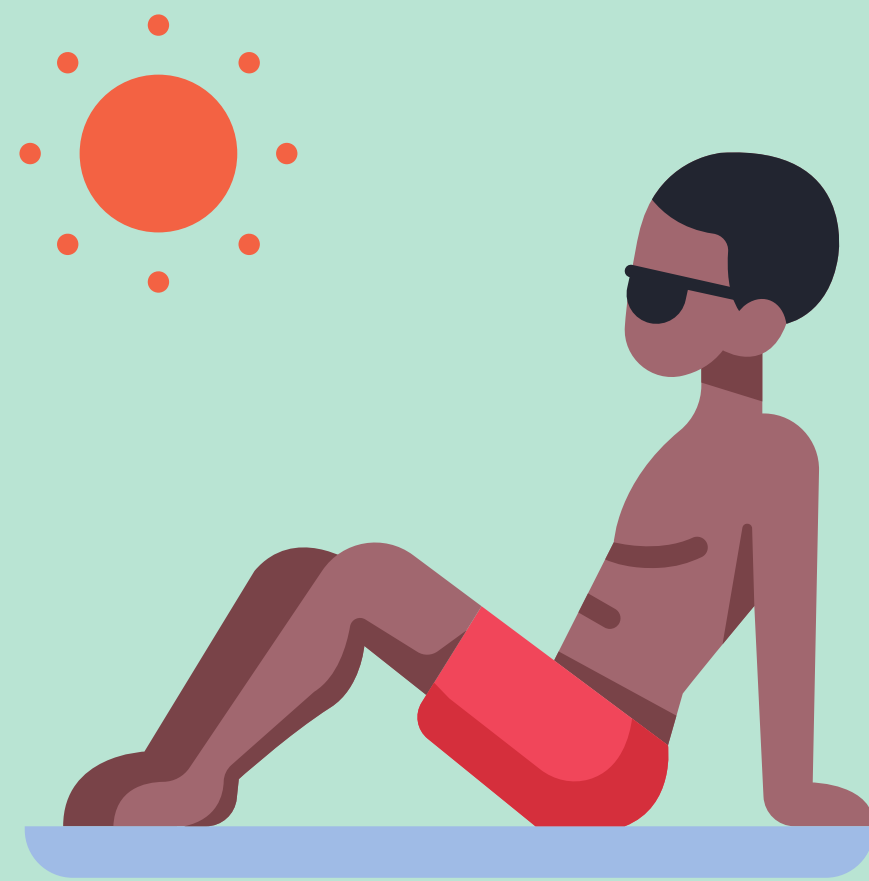
you have got 20 seconds - remember the modal



YOU ARE AT THE BEACH IN SUMMER = SUN CREAM

# TIME TO CREATE YOUR SENTENCE

you have got 20 seconds - remember the modal



YOU SHOULD PUT ON SOME SUN CREAM WHEN YOU ARE ON THE  
BEACH IN SUMMER

# TIME TO CREATE YOUR SENTENCE

you have got 20 seconds - remember the modal



PLAY MINECRAFT = TEN HOURS A DAY



# TIME TO CREATE YOUR SENTENCE

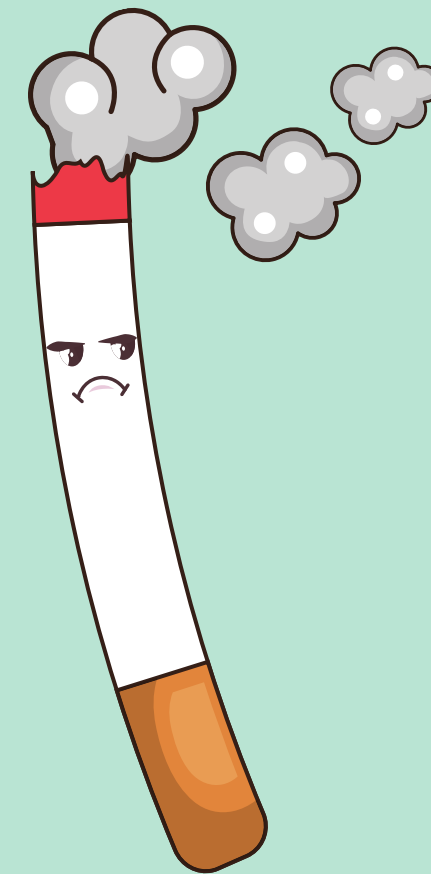
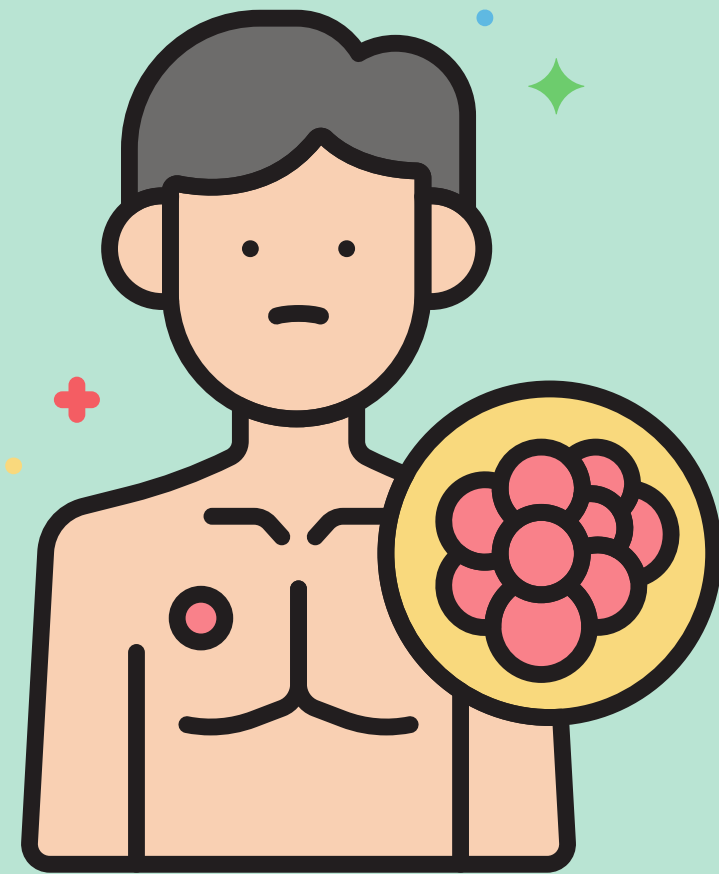
you have got 20 seconds - remember the modal



YOU SHOULDN'T PLAY MINECRAFT 10 HOURS A DAY

# TIME TO CREATE YOUR SENTENCE

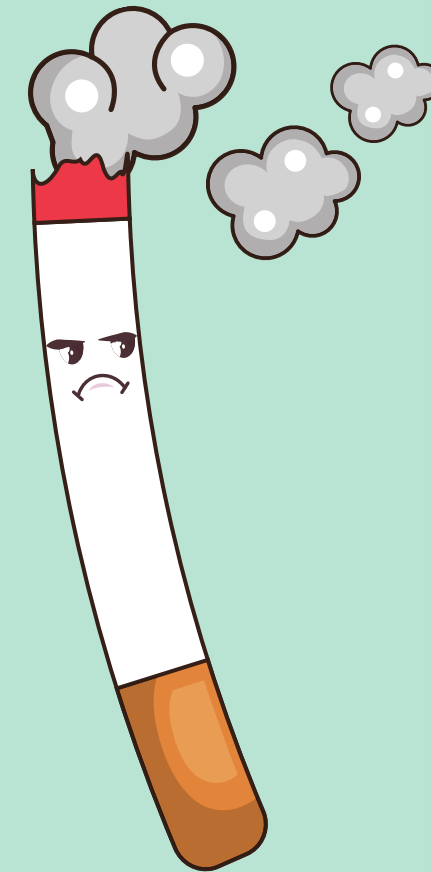
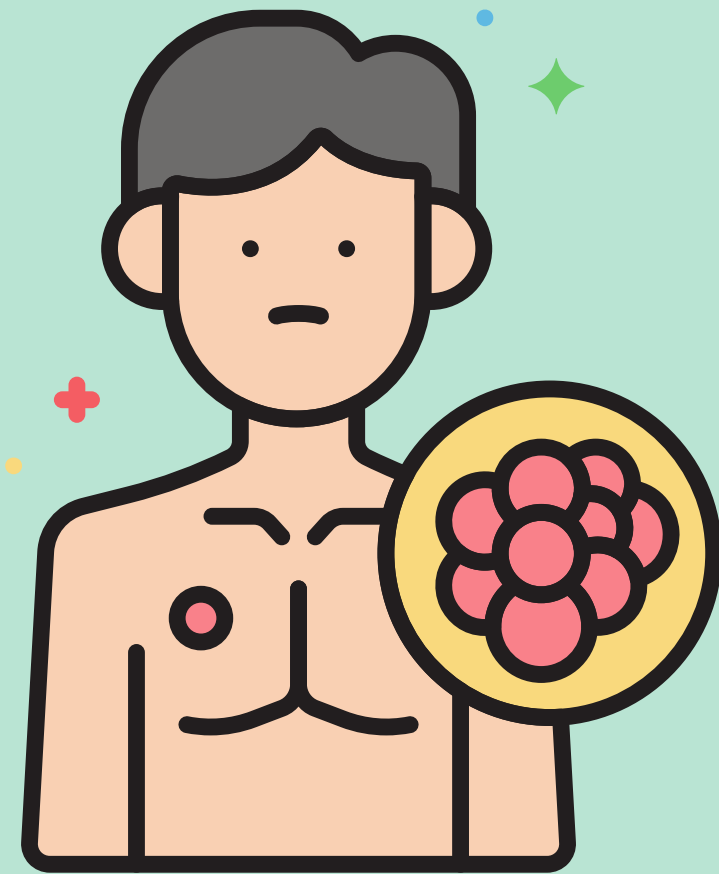
you have got 20 seconds - remember the modal



CAUSE CANCER = SMOKING

# TIME TO CREATE YOUR SENTENCE

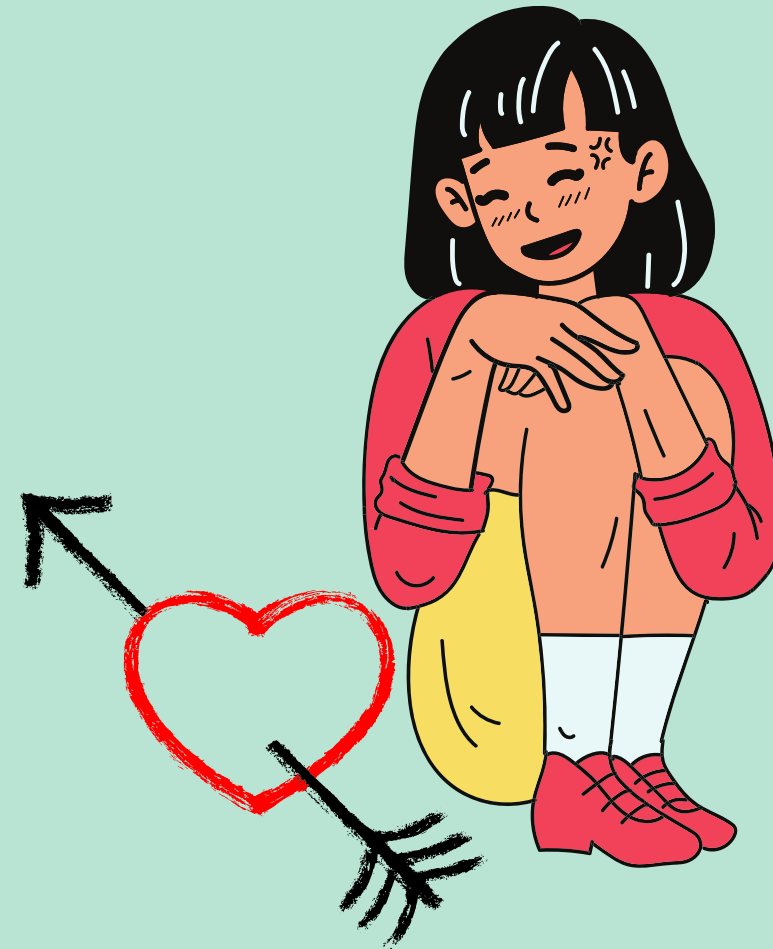
you have got 20 seconds - remember the modal



SMOKING CAN CAUSE CANCER

# TIME TO CREATE YOUR SENTENCE

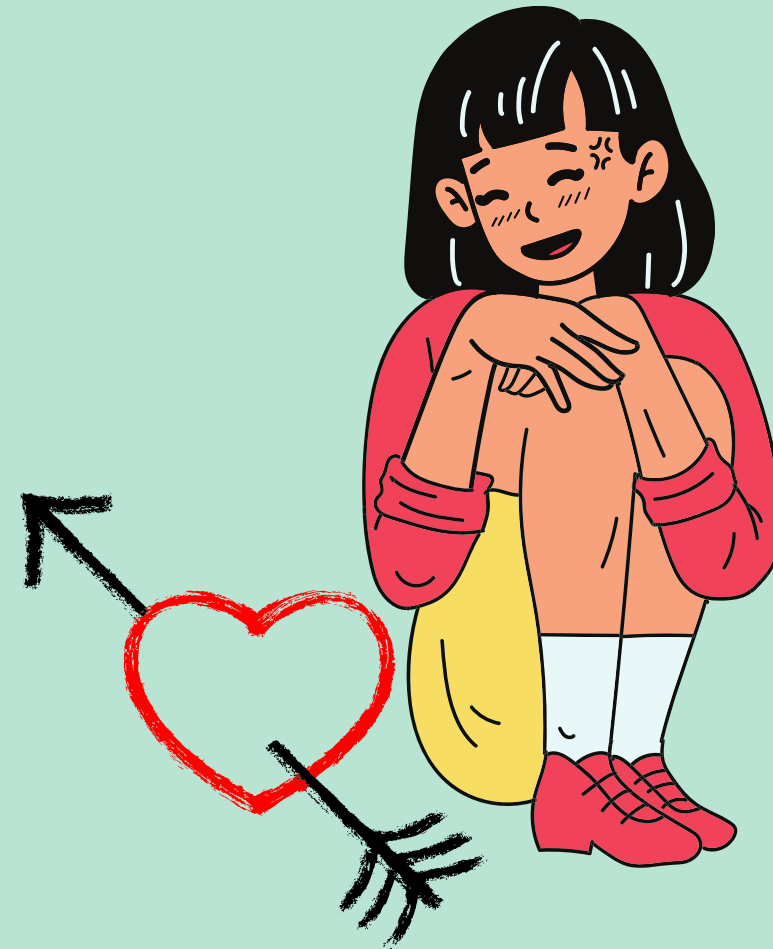
you have got 20 seconds - remember the modal



SEND A DM = YOUR CRUSH

# TIME TO CREATE YOUR SENTENCE

you have got 20 seconds - remember the modal



YOU SHOULD SEND A DM TO YOUR CRUSH

# TIME TO CREATE YOUR SENTENCE

you have got 20 seconds - remember the modal



AN EXAM = COPY

# TIME TO CREATE YOUR SENTENCE

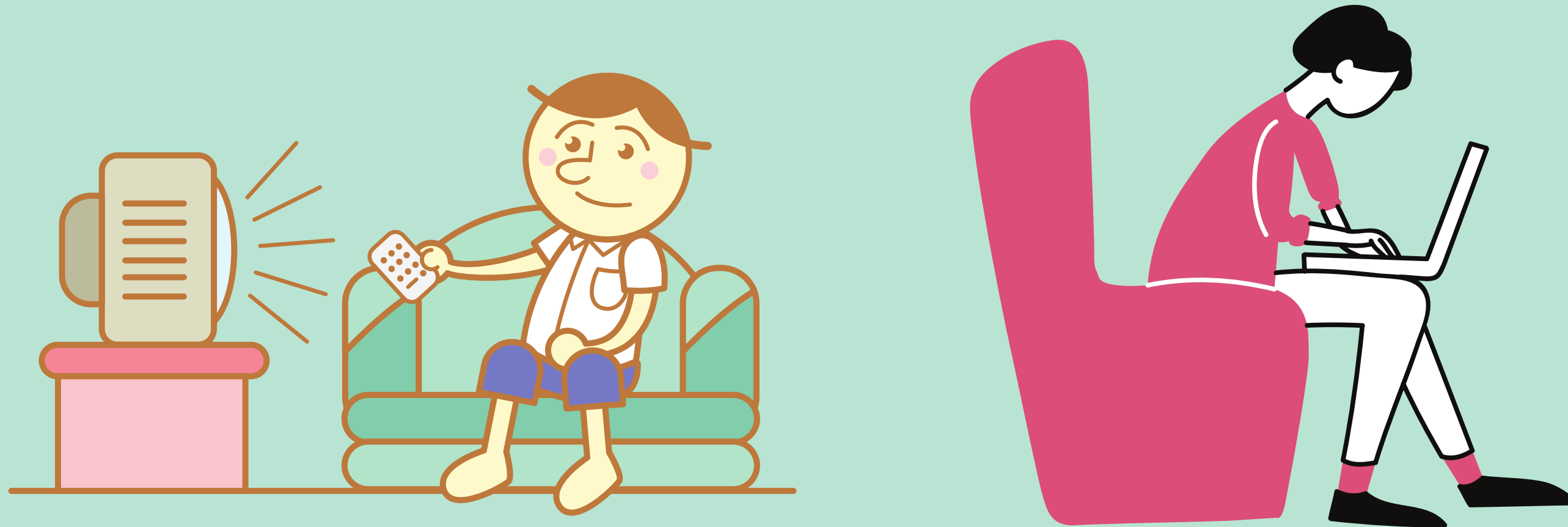
you have got 20 seconds - remember the modal



YOU MUSTN'T COPY DURING AN EXAM

# TIME TO CREATE YOUR SENTENCE

you have got 20 seconds - remember the modal

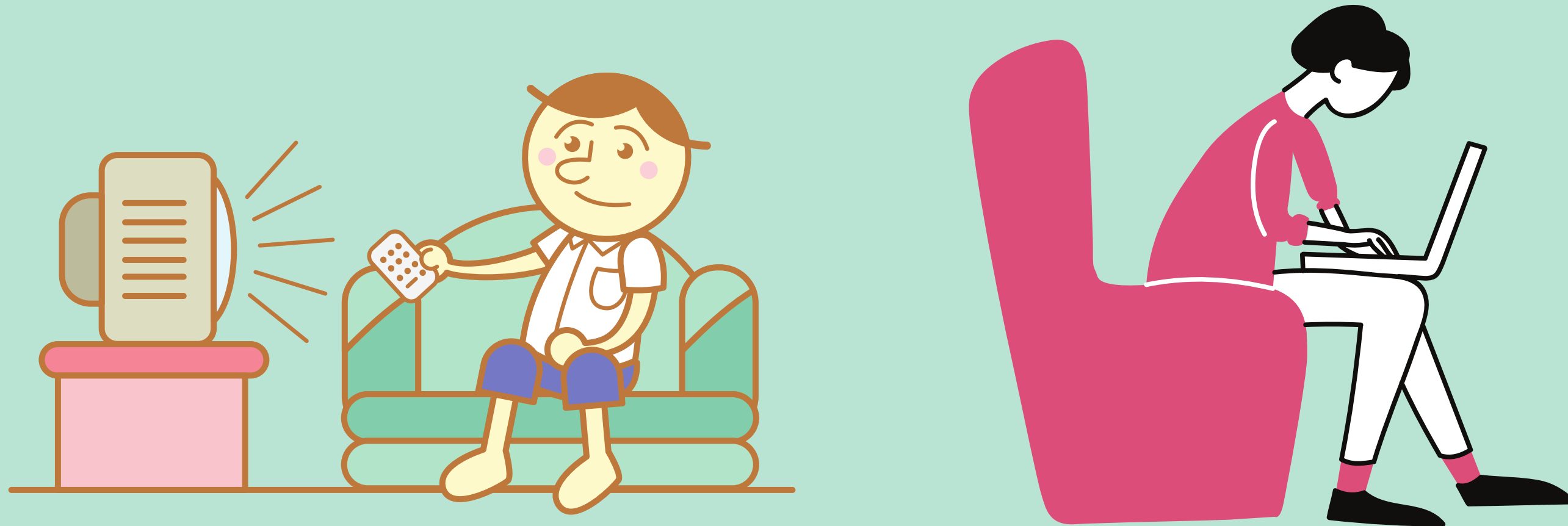


WATCHING TV (WHILE) DO HOMEWORK



# TIME TO CREATE YOUR SENTENCE

you have got 20 seconds - remember the modal



YOU MUSTN'T WATCH TV WHILE YOU DO HOMEWORK

# TIME TO CREATE YOUR SENTENCE

you have got 20 seconds - remember the modal



ARGUE = WITH YOUR BFF

# TIME TO CREATE YOUR SENTENCE

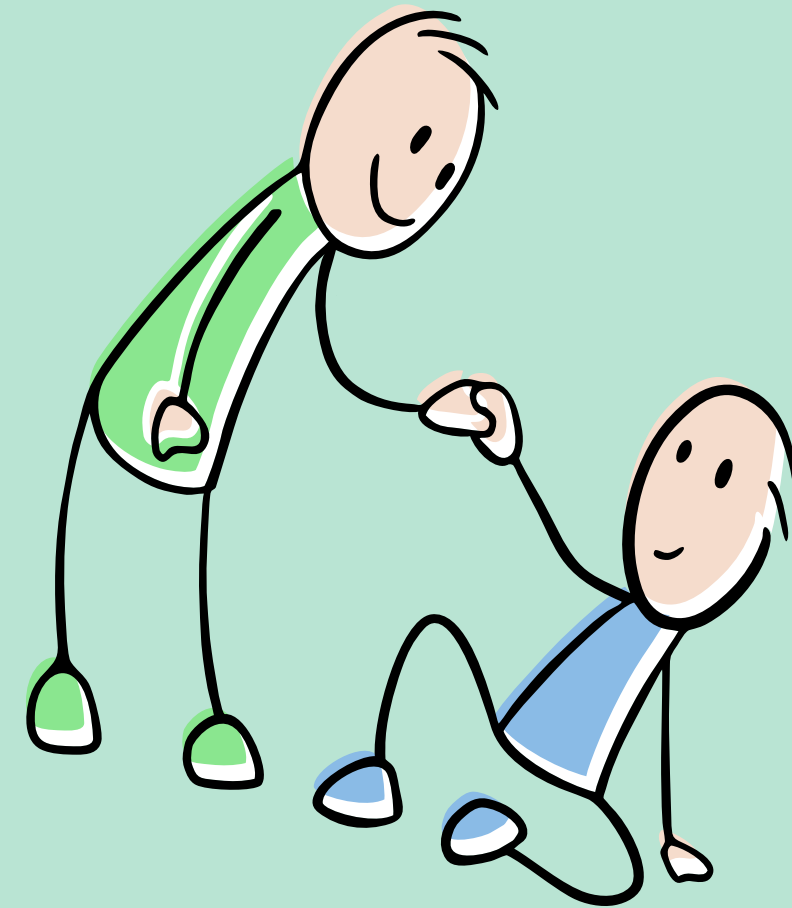
you have got 20 seconds - remember the modal



YOU SHOULDN'T ARGUE WITH YOUR BFF

# TIME TO CREATE YOUR SENTENCE

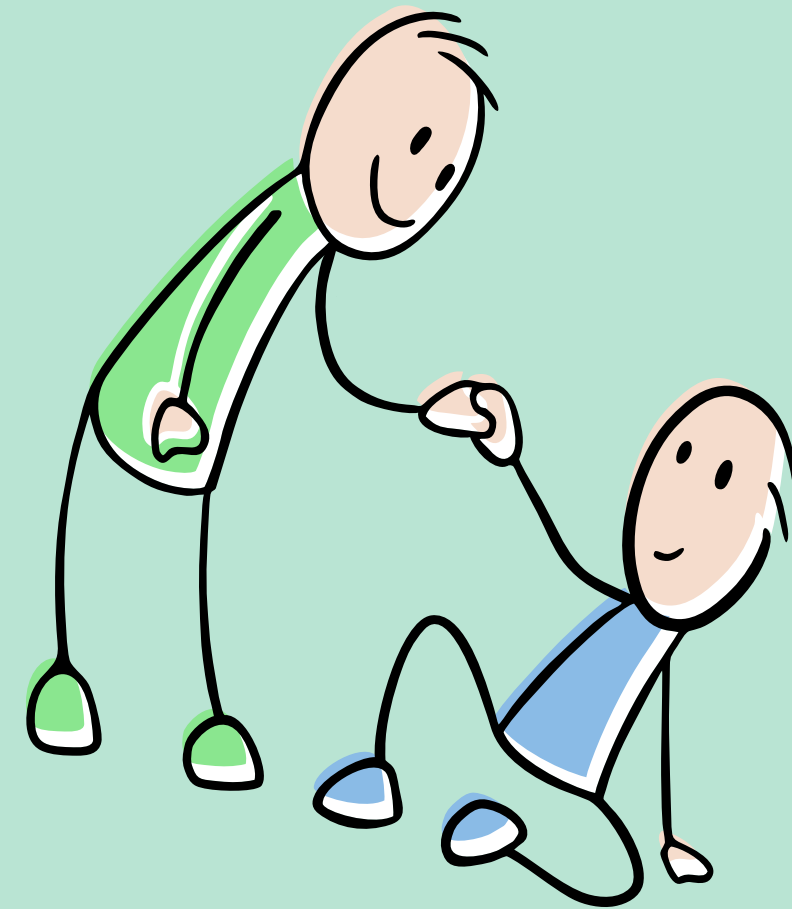
you have got 20 seconds - remember the modal



SOME FREE TIME = HELP YOU

# TIME TO CREATE YOUR SENTENCE

you have got 20 seconds - remember the modal



I HAVE SOME FREE TIME SO I CAN HELP YOU

# TIME TO CREATE YOUR SENTENCE

you have got 20 seconds - remember the modal



HAVE A BIG FIGHT = IN CLASS

# TIME TO CREATE YOUR SENTENCE

you have got 20 seconds - remember the modal



YOU MUSTN'T HAVE A BIG FIGHT IN CLASS

# TIME TO CREATE YOUR SENTENCE

you have got 20 seconds - remember the modal

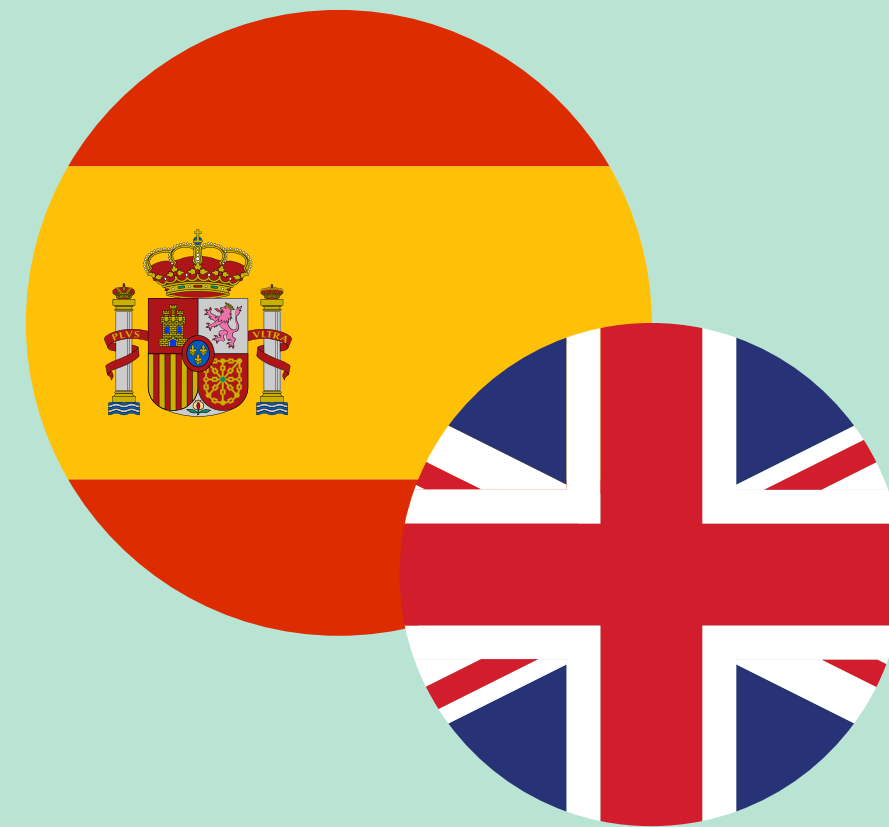


MY TEACHER = TWO LANGUAGES



# TIME TO CREATE YOUR SENTENCE

you have got 20 seconds - remember the modal



MY TEACHER **CAN** SPEAK TWO LANGUAGES

# TIME TO CREATE YOUR SENTENCE

you have got 20 seconds - remember the modal



A PENGUIN = FLY

# TIME TO CREATE YOUR SENTENCE

you have got 20 seconds - remember the modal



A PENGUIN CAN'T FLY



**END OF THE  
GAME**

